

Lorrain Project – Copper, Nickel

Location

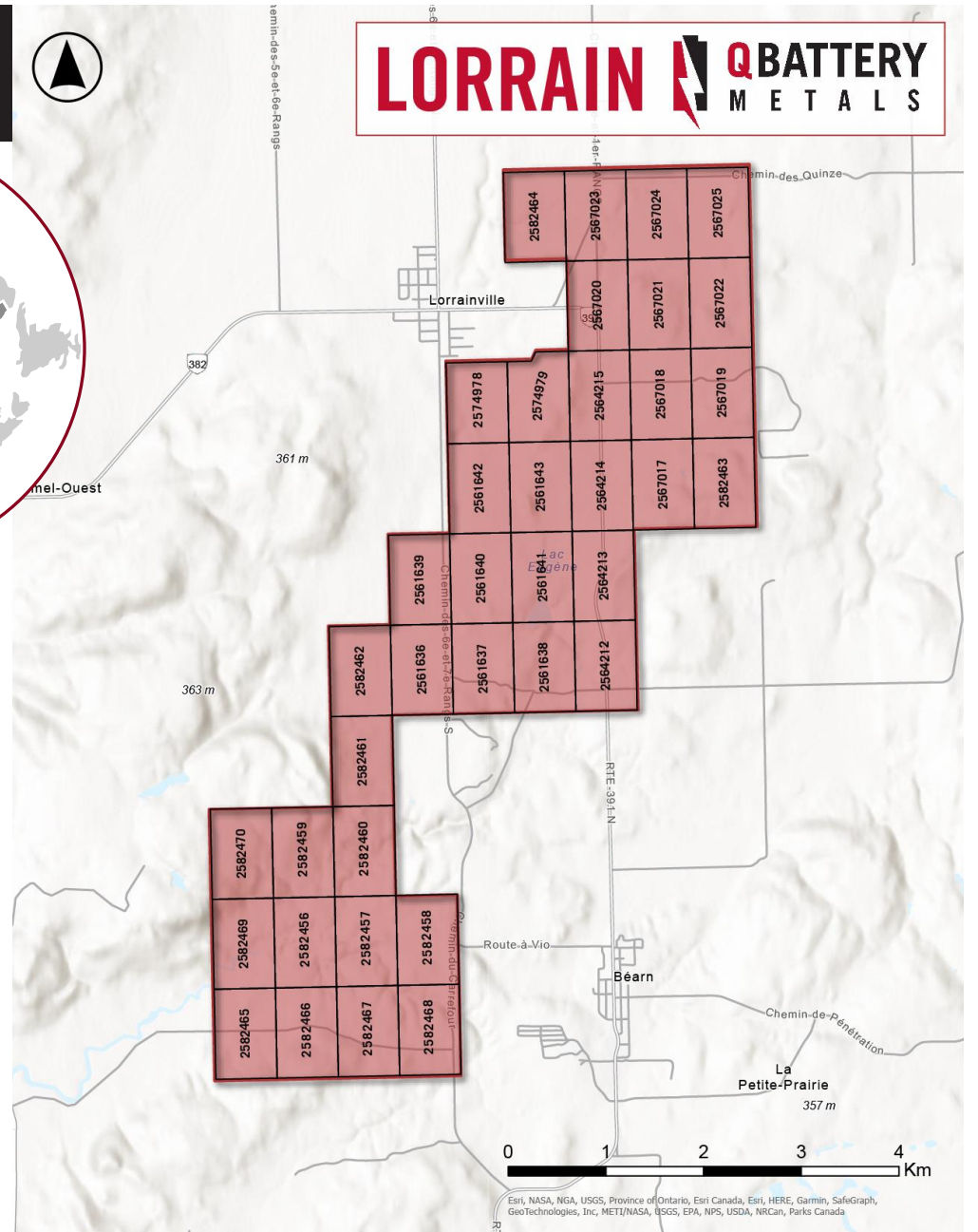
Located directly adjacent to Lorrainville in western Quebec.

Highway 391 passes north-south through the property, with various farming and other roads providing access throughout the claims.

Regional Setting

The region is host to several nickel, cobalt, and platinum group projects, including historically mined deposits within 15-25 km of the Lorrain, with the Lac Croche, Alotta and Delhi Ni deposits to the north, the Pyke, Lac Kelly, and Mine Lorrain (Ni) to the east, and the Fabre Co deposits to the south.

The historically mined Lorraine nickel mine produced 661,480 tonnes of 0.38% nickel, 0.90% copper, 0.62 g/t gold, with PGE, silver, and cobalt being reported between 1964-68. The nearby Blondeau nickel deposit (250,000 tonnes at 0.45% Ni and 0.45% Cu.) and Kelly Lake PGM-Cu-Ni deposit indicate that the ultramafic intrusions in the region are capable of producing sulphide-ore accumulations.



Lorrain Project – Copper, Nickel

Historic Drilling

- A total of 16 diamond drill holes have been historically documented within the claims (1951-2002). Most of these were short drill holes (10m to 50m) not designed to test the peridotite for Ni-Co potential.
- One drill hole completed in 2001 by Exploration Tom Inc (LA-01-06) was reported as returning significant results on the east side of the peridotite, summarized below:

	From m	To m	Length*	Pt_ppb	Pd_ppb	Ag_ppm	Cu_pct	Ni_pct
	84.5	97.7	13.2	457	433	3	0.59	0.60
Including	92	96.5	4.5	732	595	2.1	0.66	0.78
Including	93.5	95	1.5	1020	790	3	0.67	1.08

Fieldwork

- In 2021, Q Battery completed a total of 323.3 metres of diamond drilling over three holes in an attempt to replicate the 2001 drilling results. Sampling of core returned somewhat elevated values with the highest Pt assay of 0.0167 ppm, along with elevated cadmium, cobalt, copper, nickel, lead and zinc. Also, a single 1.9 metre sample taken from hole LO-21-03 returned an elevated gold value of 0.123 ppm (82.2-84.1m).
- The Q Battery geologic team contemplate continuing hole LO-21-01 to the targeted depth of 200 metres in order to fully test the mineralization potential.
- The Guimond-Church Ni showing is to be mapped and sampled in June, 2023, with exploration directed towards the peridotitic ultramafic rocks for Ni-Co-Cu potential.

